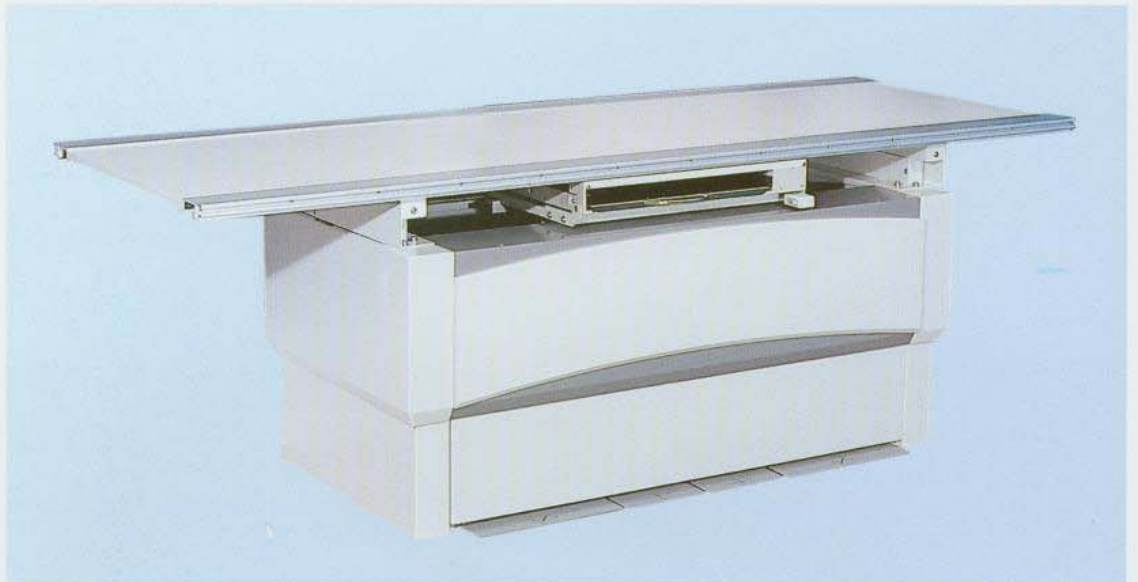


Elevator-2

Coordinatus-2

Bucky table with floating table top

Elevator-2



Coordinatus-2



Elevator-2 and Coordinatus-2:

Easy patient positioning with the smooth movement of the floating table top

The table top is released by a convenient foot pedal. All locks are electromagnetic assuring years of trouble free operation. The table top moves 60 cm to the left, 50 cm to the right and ± 12 cm transversally.

Optimal conditions for excellent radiographs

The table top is of a special construction using super low absorption materials assuring low radiation dose to the patient. In addition, the optimal object to film geometry yields high contrast radiographic images.

The Bucky carriage accepts Bucky devices from all leading manufacturers. The carriage allows full Bucky excursion over the entire table length. Positioning is quick and efficient by means of an electromagnetic lock.

Elevator-2:

Convenient height adjustment from 54 cm to 85 cm

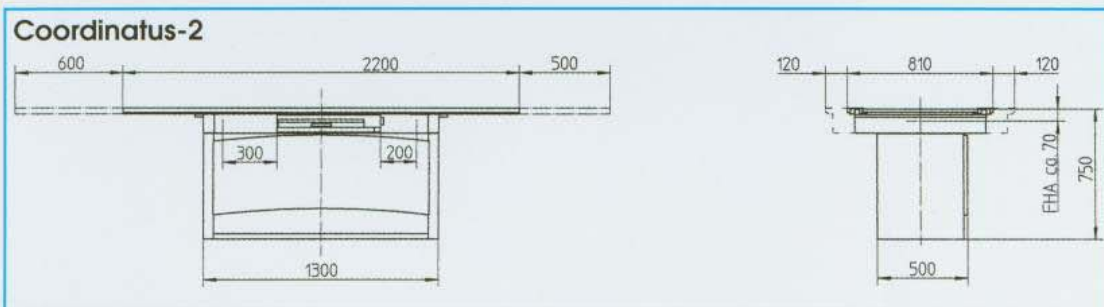
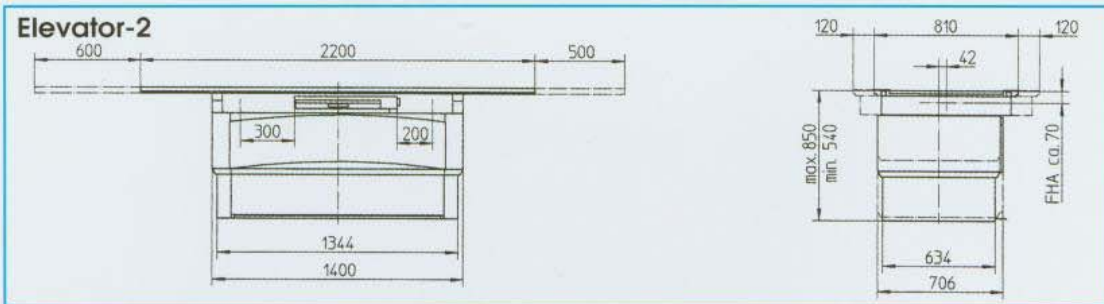
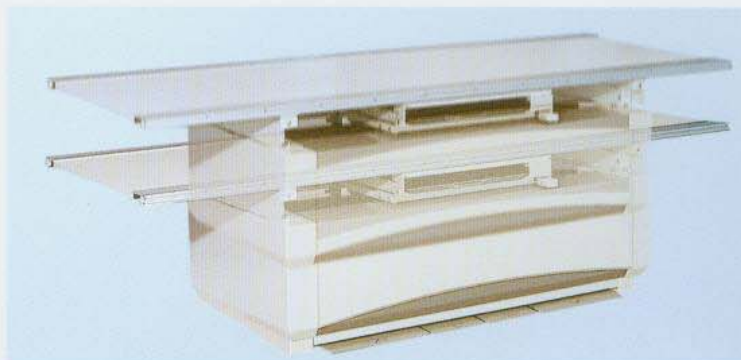
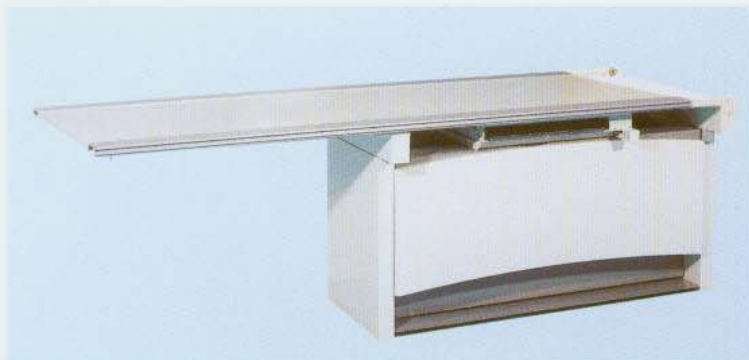
The table height adjustment is made by depressing the foot pedal and the safety switch on the operation handle. The table stops automatically in the predefined exposure height. The ability to adjust the table height from 54 cm to 85 cm is ideal for transferring none ambulatory or casualty patients from a wheel chair or a mobile stretcher to the table.

Smooth and silent vertical travel

The super silent motor with its electronic control system gives the table a soft start and stop, the effect is that the patient has little or no sensation of vertical movement.

Results:

The Coordinatus-2 or the Elevator-2 are the ideal Bucky tables for the hospital emergency room, radiology department or the private practice - there is no better choice for patient comfort and operator's convenience.



Accessories:

- Patient hand grips
- Patient positioning pad
- Compression device
- Lateral cassette holder
- Adapter part for
- Head + hip clamps