



A FULLY INTEGRATED UNIVERSAL DIAGNOSTIC SUITE THAT MEETS ALL YOUR NEEDS

- Single detector general purpose radiographic system
- Smart Console with Full DR Integration for Efficient Workflow
- Extra-wide (100-200 cm) SID range
- Ease-of-use and extremely durable design
- Counterbalanced design and advanced Anti-collision features for Patient and Operator safety
- Suite of accessories including mobile Z-Table and Stitching stand



**MOTORIZED
AND MANUAL**



**FULL DR
INTEGRATION**



**AUTO-POSITIONING
AND -STITCHING**



**COMPACT
DESIGN**



SAFETY



ROBUST BUILD

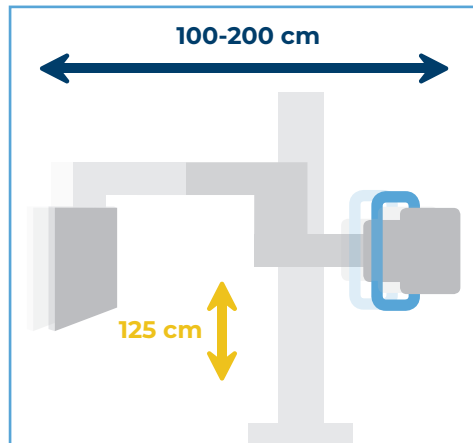


**EXCEPTIONAL
IMAGE QUALITY**

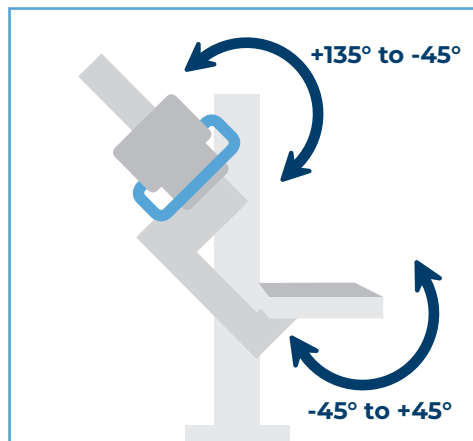
► This brochure features both standard and optional elements.

FEATURES TO INCREASE PATIENT THROUGHPUT, CHOICE OF STUDIES AND OPERATOR COMFORT

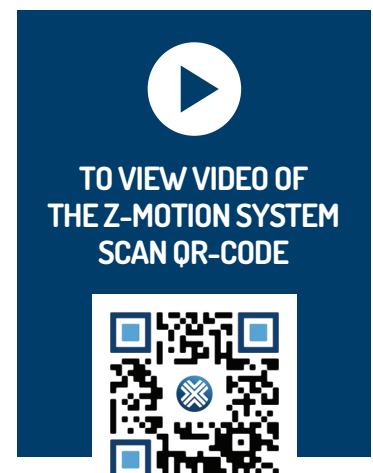
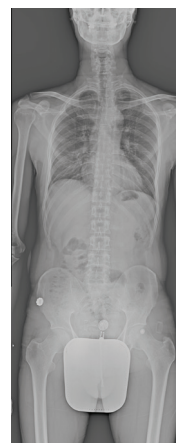
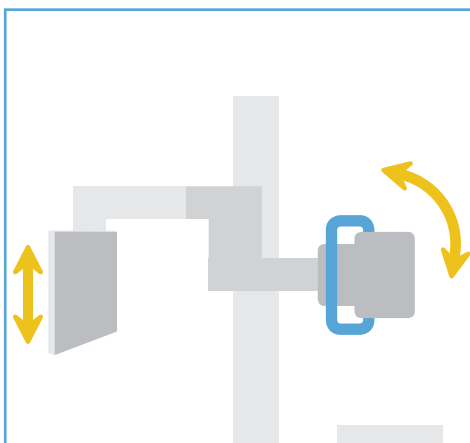
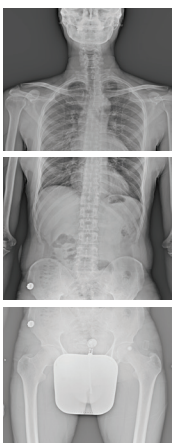
BEST-IN-CLASS SID RANGE



OBLIQUE STUDIES IN 180° RANGE



AUTO-STITCHING FOR FULL-SPINE OR FULL-LEG PROCEDURES - CONSTANT FOCUS POINT (2/3 FRAMES)





NEW STITCHING STAND

- Reduced patient movement for optimal image quality
- Metal ruler to assist stitching
- Adjustable handles
- Easily maneuverable on 4 castors



10.4" OR 12.1" SMART CONSOLE

- With PXIM System Software for
- Control of all movements in one place
 - Access to favourite APR positions
 - Quick Image Preview to evaluate exposure
 - Integrated generator parameter control
 - Patient Positioning Guide to assist operator*
 - System status and error monitoring



REMOTE BOX

- Moves system into selected APR
- Engages collimator light
- System power and Emergency Stop

FULLY COUNTERBALANCED CONSTRUCTION WITH SENSORS

- Quick and easy manual positioning
- Low impact motors for maximum patient safety
- Proximity sensors to prevent collision

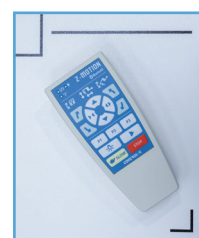


DETECTOR-SIDE HANDLE AND CONTROL

- Precise adjustment to patient height
- Remote collimator light switch
- System status displays
- Configurable brake release switch

FULL-FUNCTION REMOTE CONTROL

- Bluetooth wireless operation
- Access to all motorized functions of the system



Z-TABLE

- Portable four-way radiographic table
- Mechanical brake release, no power cord
- Large castors for easy maneuverability



* Feature dependent on choice of integrated Acquisition Software

SPECIFICATIONS

Z-MOTION MOTORIZED STAND

Motorized movements	4 movements with electric brakes and clutches
Manual movement	Counterbalanced horizontal, vertical and rotational movement of system and rotation of tube-head unit
Tube-head Unit	10.4" LCD with full Acquisition SW Integration (Motorized movements, Remote APR, Generator Control, Image Preview, Stitching Workflow, Positioning Guidance*)
Adjustable SID / Arm rotation	100 to 200 cm (motorized and manual) / -45° to +135° (motorized and manual)
Detector tilt / X-ray tube rotation	-45° to +45° (motorized) / -105° to +105° (manual)
Vertical motion range	125 cm (motorized and manual)
Remote control (optional)	Wireless

FOUR-WAY FLOATING TOP Z-TABLE (OPTIONAL)

Tabletop size	200 cm x 66 cm
Fixed tabletop height	76 cm
Tabletop longitudinal travel	+/- 35 cm
Tabletop lateral travel	+/- 13,4 cm
Patient load	Max. 150 kg

HIGH FREQUENCY GENERATOR

Output Power	50, 65 or 80 kW
mA Range	10-1000 mA
kVp Range	40-150 kV
mAs Range	0.1-800 mAs
Stored energy generators are available up to 50 kW power	

X-RAY TUBE

Wide selection of Industry-leading X-ray tubes

COLLIMATOR

Manual or automatic Collimators, including with Camera and Proximity Sensor

DIGITAL DETECTORS

43x43 cm or 35x43 cm fixed or wireless panels with various resolutions available

DOSAGE LIMITATION

Automatic Exposure Control (AEC) and DAP meter to avoided unnecessary dose

SYSTEM FOOTPRINT

Recommended floor space with Z-Table	4x3m (12 m²)
Ceiling height requirement	250 cm

POWER REQUIREMENT

Input Line Voltage	3x400V / 3x230V for three-phase generators 1x230V (15A) for stored energy generators
--------------------	---

EXCEPTIONAL IMAGE QUALITY



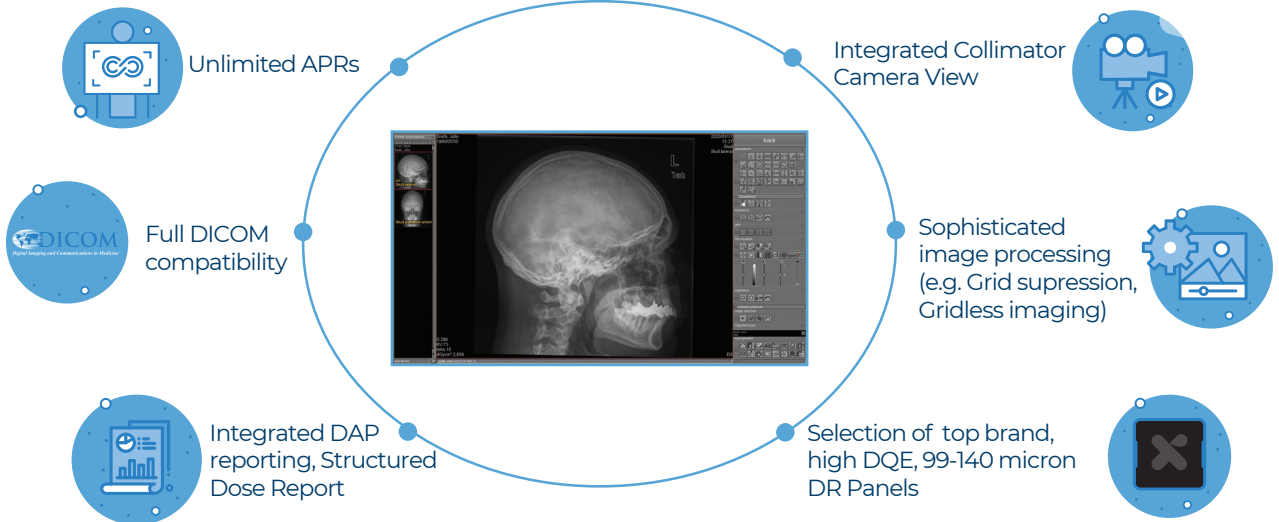
* Feature dependent on choice of integrated Acquisition Software

FULL DR SYSTEM INTEGRATION



INTELLIGENT MODULAR SOFTWARE (PXIM):

- **PXIM Console** - LCD user interface for Movement selection, Generator settings, Image Preview and other advance features
- **PXIM Embedded Control** - Modular embedded software enabling Automated Tracking, Stitching, Positioning, Safety sensors and overall Communication
- **PXIM Service** - Remote Diagnostics and Calibration



CANON SOFTWARE INTEGRATION WITH PREMIUM DR PANELS

Canon

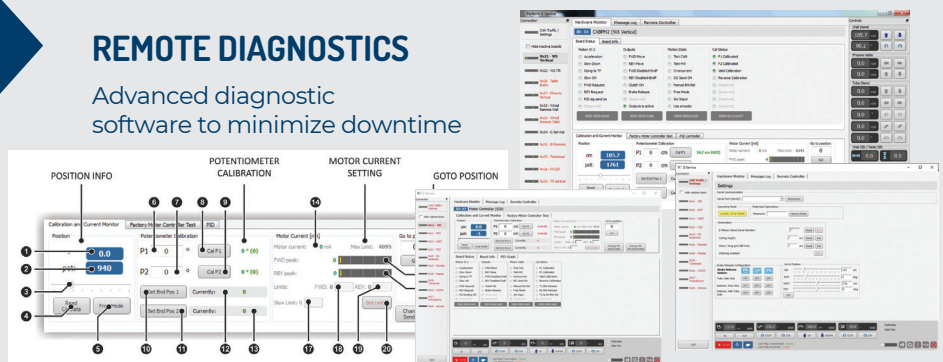


ARTIFICIAL INTELLIGENCE SUPPORTED CLINICAL DIAGNOSTIC SOLUTIONS



REMOTE DIAGNOSTICS

Advanced diagnostic software to minimize downtime



CERTIFICATIONS

ISO 13485, CE marked and FDA cleared

CE
1011



Control-X Medical Zrt. (cPlc),
2120 Dunakeszi,
Röntgen street 6., Hungary



Please contact us at
sales@cxmed.com
or at +36 1 381 0301



Follow us on

