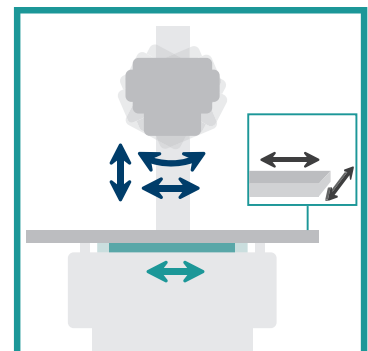




cxmed.com

ZOOMAX WHITE (ORTHO)

VETERINARY X-RAY SYSTEM



ZOOMAX WHITE AND WHITE ORTHO

■ KEY FEATURES

- Fully adjustable tube stand with variable SID supports all types of examinations
- Fully descending X-ray tube for standing exposures (Ortho version)
- Automated coupling synchronizes horizontal movement of tube and receptor
- Available with Generator Control Console for full system integration or Standard ZooMax Brake Release Console
- Floating table top with side rails and possibility to house Generator inside Table

ZOOMAX WHITE (ORTHO)

VALUE- ADDED FEATURE



Extendable Tabletop

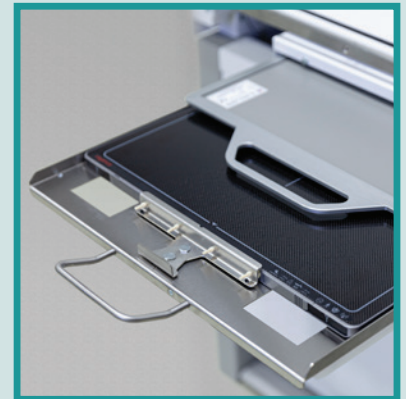
POWERFUL SINGLE OR THREE-PHASE OPERATION

Single-phase stored energy **ZooMax** high frequency generator:
 32kW, 3kWs, 40-150kV, 10-400mA and 0,1-320mAs, 5s cycle time

3-phase 32kW high frequency generators:

A ZooMax: 32kW, 40-150kV, 10-400mA and 0,1-320mAs

B CPI CMP 200: 32kW, 40-125kV, 10-400mA and 0,1-500mAs



Fixed or Removable Panel and/or Grid

CONSOLE OPTIONS



10" LCD
GENERATOR
CONSOLE

- Slim, modern User Interface to set exposure parameters
- Customizable main page and workflow buttons (e.g. 1024 APRs, grid control, focus, etc.)
- Remote diagnostics and software updates
- Easy installation

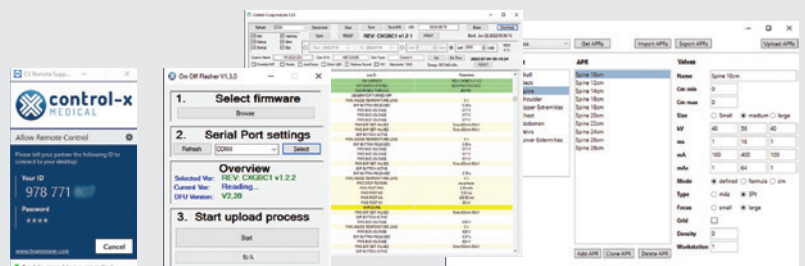


STANDARD
BRAKE
RELEASE
CONSOLE

- Modern design with ergonomic handlebar
- Membrane brake release buttons facilitate vertical or horizontal movement and rotation of tube head
- Includes digital angle display

REMOTE SUPPORT

Service software allows troubleshooting to minimize downtime.



Please contact us at sales@cxmed.com
 or at +36 1 381 0301.

ZooMax White (Ortho) Info sheet – Version 1.0, June 2026



Follow us on

CERTIFICATIONS

Control-X Medical veterinary diagnostic products are CE marked.

